

## The established corona solution

### Extra wide treatment width

Treatment width up to 70 mm

### Integrated air blower

No pressured air required due to internal blower

### Easy connection

Easy connectable I/O interface available

### Long durability of electrodes

Long durability due to minimal consumption of electrodes

### Low treatment temperature

Suitable for temperature-sensitive materials

### Easy integration

Simple integration into existing production lines

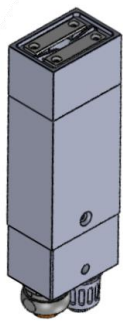
### Non-conductive materials

Suitable for non-conductive materials

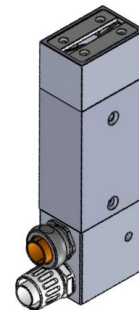
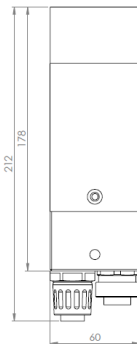
Plasma head	T-JET	T-JET XW
Treatment width <sup>1)</sup>	up to 50 mm	up to 70 mm
Working distance <sup>2)</sup>	up to approx. 25 mm	up to approx. 25 mm
Sizes (h/w/d) approx. in mm (A or B without supply)	155/60/40 (A) 175/60/40 (C)	212/60/40 (A) 198/60/40 (C)
Weight approx.	600 g	700 g
Power	400 W	600 W
Supply cable <sup>3)</sup>	2 m	2 m
HV-connection to the head	From top side (A) or lateral (C)	From top side (A) or lateral (C)

Depending on the application: <sup>1)</sup>Working distance, treatment speed <sup>1)2)</sup>material

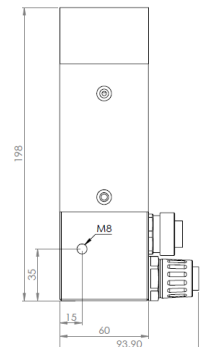
<sup>3)</sup> Bending radius : 100 mm



HV-connection (A)



HV-connection (C)



We would be pleased to send you drawings and CAD dates