

# Plasma T-SPOT Series

## The variable plasma solution

### Adjustable power

700 W or adjustable from approx. 250 W to 500 W

### Suitable for robots

Flexible supply cable to the plasma head

### Space saving construction

Small space requirement due to compact plasma head design

### Multiple connections

I/O interface and BUS system (e.g. PROFIBUS or PROFINET) available

### Maintenance friendly

Easy exchange of electrodes

### Easy integration

Simple integration into existing production lines

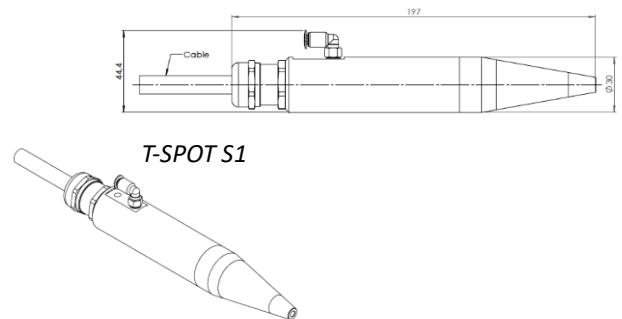
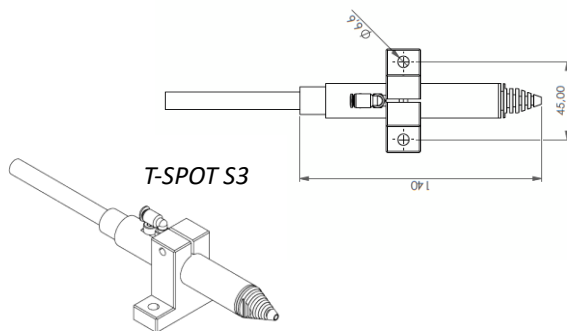
### Wide range of materials

Wide range of applications for conductive and non-conductive materials

Plasma head	T-SPOT S3	T-SPOT S1
Treatment width <sup>1)</sup>	Up to 10 mm	Up to 13 mm
Working distance <sup>2)</sup>	5 – 7 mm	5 – 10 mm
Sizes (H/B/T) approx. in mm	140/20	197/30
Weight approx.	350 g	600 g
Power	300 – 500 W nominal power output at 300 W	700 W
Supply cable <sup>3)</sup>	2 m or 4 m (with external transformer)	
Compressed air, 6 bar	30 l/min	30 l/min

Depending on the application:<sup>1)</sup> material, <sup>2)</sup> treatment speed, <sup>3)</sup> working distance

<sup>3)</sup> bending radius: 50 mm



*We would be pleased to send you drawings and CAD dates.*